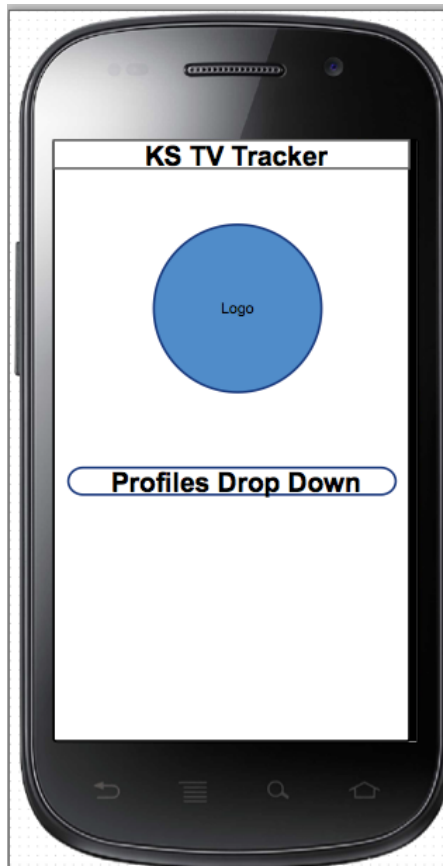


Screen Designs



Profiles page. The user will be able to select any profile and continue to use the program with the selected profile

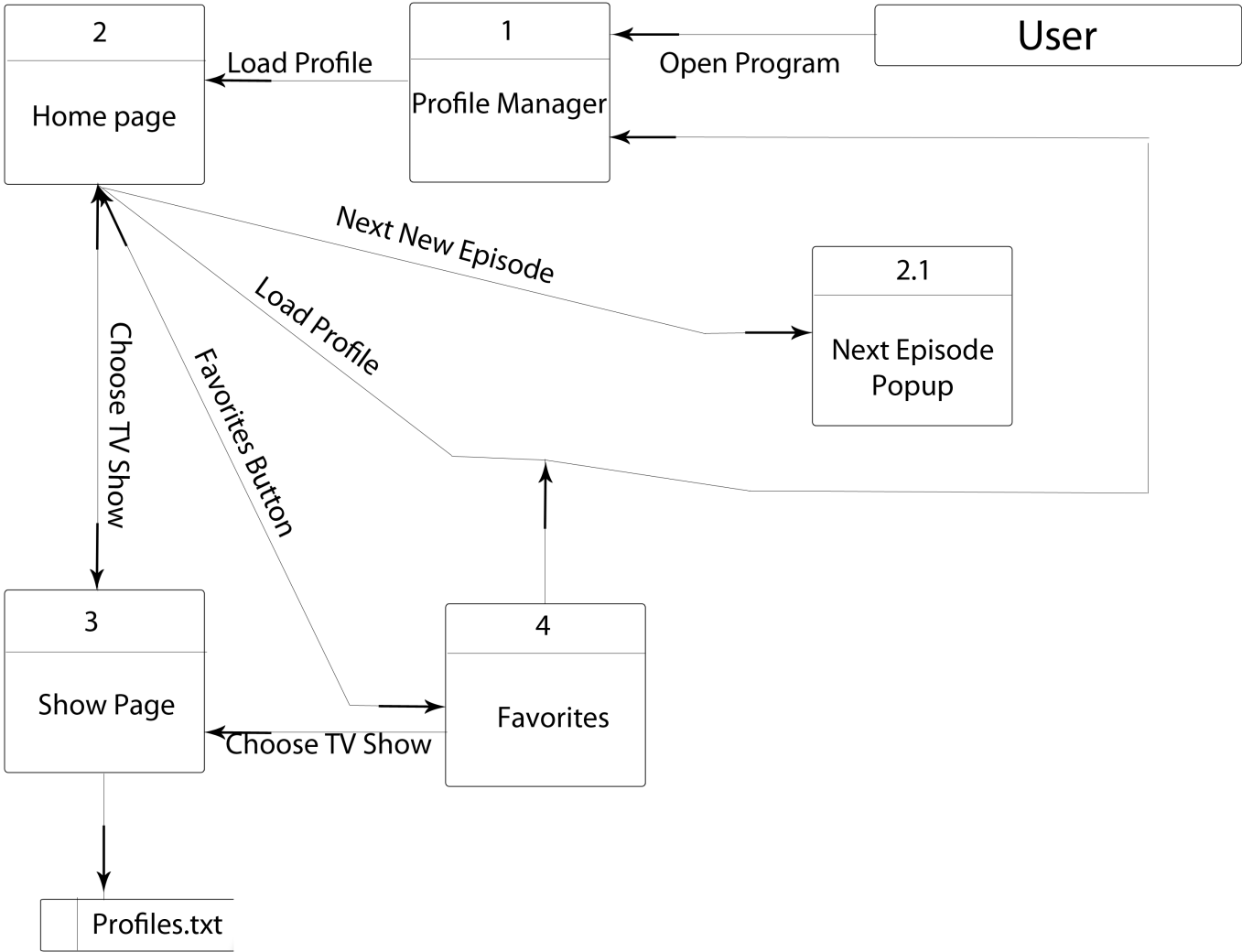


Individual Show page. This will work for the dynamic and hard coded shows. It will display the timer and each individual episode

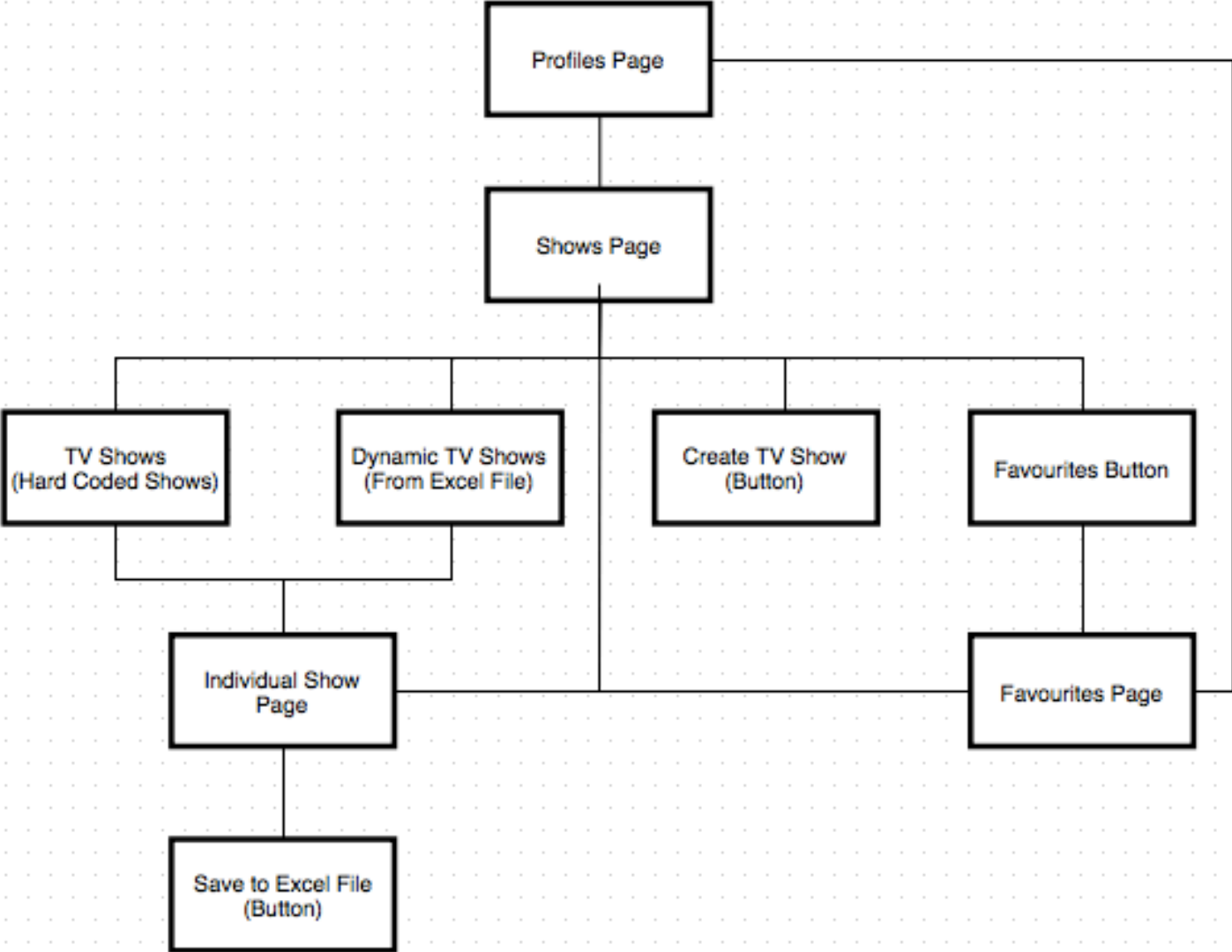


Shows Page. This page will show all the shows, hardcoded and dynamic. The favourites page will have the same design.

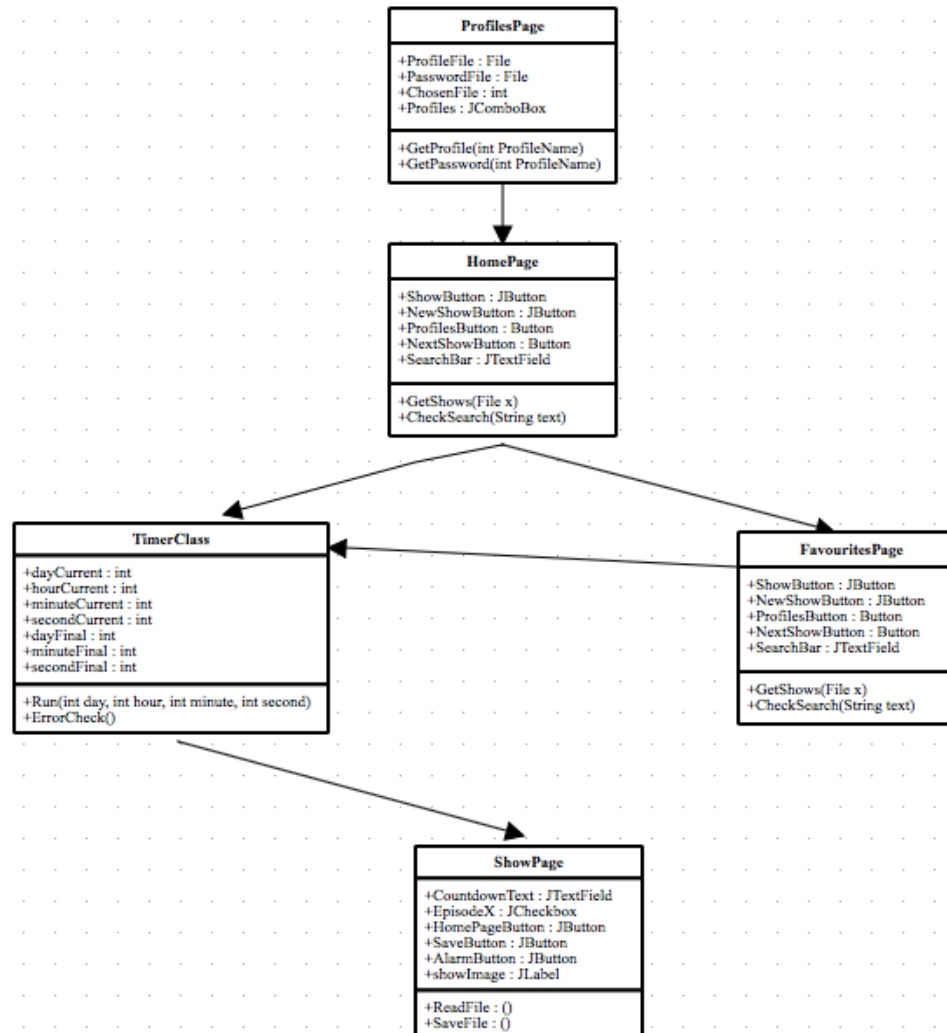
Data Flow Diagram (DFD)



Modular Diagram



Unified Modelling Language Diagram (UML)



Test Plan

Test Number	What is being Tested	Test Method	Expected Result	Final Result
1	Multi Platform	Run the program on Windows 8 and on OS X El Capitan.	Since the program is written in Java, it should have no problem running on either operating system	As expected
2	Ensuring the timer will work	Open up the each individual show, including a newly created show, and check if the timer is correct.	The timer should display the exact countdown time for every show.	As expected
3	Ensuring the buttons work	Click on every button to ensure that it will do its required task, whether it is switching between screens or saving to a file	The buttons will hide and open up a new screen or save the episodes of the current TV show opened	As expected
4	Ensuring the episodes save and restore	I will select each checkbox and will save the program. Upon restarting the program, the checkboxes should remain selected. This test will be carried out when the checkboxes are unselected.	The checkboxes, ticked or unselected, should stay ticked or unselected when the program is saved.	As expected

5	Ensuring there is different data for each profile	I will open the program up and run Test 4 on each show. I will repeat this for each profile, changing the checkboxes ticked. I will then go through the profiles to see if all the data is saved as put in.	Each profile should have the data that was saved to the profile.	As expected
6	Password	I will set a password for each profile and see if the program grants me access with the wrong password.	The profiles should have their respective passwords and will only grant access if the password inputted by the user is correct.	As expected however there was no way to disregard the password totally
7	Alarm	I will check on any random TV show that the alarm is enabled once the button is clicked, and will ring if the program is open when the selected TV Show's episode is released (when the timer reaches 0 hours, 0 minutes, 0 seconds)	The program will play a sound clip once the timer of a certain TV Show reaches 0 hours, 0 minutes and 0 seconds	As expected

Design

- The program will begin at the profiles page, where the user has the option to choose a profile with its unique data. Once chosen, a button will take the user to the main page, where all of the TV shows are displayed. The user will then be able to do one of 3 things; click a button to go to the profile's favourites page, click a TV show and go to the TV show's page or click a button to create a new TV show. Once on the TV show page, the user will be able to see a countdown timer of when the next episode will be released, and an array of checkboxes corresponding to an episode from the TV show selected. This will allow the user to keep track of how many episodes s/he has seen.
- A prototype will be made in November and will be sent to the user to test out and verified. This will include all of the necessary functions however possibly excluding functionality to all of the TV shows.
- With regards to maintenance, the program will be shared over Google drive, allowing me to make necessary changes to the code and to the excel files if any bugs occur that I wasn't aware of. I will also be able to update the show details, change the number of episodes, stop the timer in case the show has been cancelled, etc.

Word Count: 236